

# 050 Series OPTICAL TRACKERBALL

## IP68 Sealing

### USB, PS/2 and Quadrature Outputs

#### ● GENERAL SPECIFICATION

- Solid State Optical Navigation Technology
- Totally Waterproof (IP68)
- ESD Protected (Impenetrable Barrier)
- Adjustable Friction Control
- Fixed and Removable Ball Versions
- Self-draining/back flushing Models
- Antivandal Mounting Options
- OEM Custom Resolutions
- Decontamination Friendly



#### ● SPECIFICATIONS

##### Mechanical

Weight	210 grams
Ball	Epoxy Resin, 50.8 mm
Tracking Force	10 grams Nominal Continuous – Free Running 80 grams Nominal Continuous – Friction / Scraper Ring 10 - 160 grams Nominal Continuous – Variable Friction Ring/Removable Ball
Ball Load	>500N Maximum downward pressure (50 Kg) for 2 mins
Ball Rotation	Continuous and reversible – any direction
Resolvable Ball Speed	14.4 IPS (2.3 Ball Revolutions per Second)
Housing Material	Polycarbonate (Lexan®LS2 lens grade)
Transducer	Optical Navigation Technology, solid state sensing
Mounting Position	All angles (Dependant on top plate arrangement)

##### Electrical

Standard Output Connector	JST style 2mm Pitch PH series 10 way right-angled header
Mating Connector	JST style 10 way CR, KR or KRD type connector JST part no: PHR 10
Resolution (Quadrature)	314 / 157 pulses per ball revolution, switchable (custom resolutions available)
Resolution (Protocol mode)	1256 pulses per ball revolution (custom resolutions available)
External Switch Inputs	3 switches Left, Middle, and Right. Connection through JST 2 mm pitch 4-way right-angled header. Mating part no: PHR 4
Supply Voltage	3.6V to 5.5V
Supply Current	110mA typical 150mA maximum

##### Environmental

Operating Temperature	0°C to +55°C *
Storage Temperature	-25°C to + 85 °C *
ESD	>15KV air discharge and contact – fully protected
Impact	> 20 Joules with Anti-Vandal option
Lifetime	> 1 million ball revolutions
Sealing Capabilities	IP68 (tested submerged at 2m depth for 24 hours)

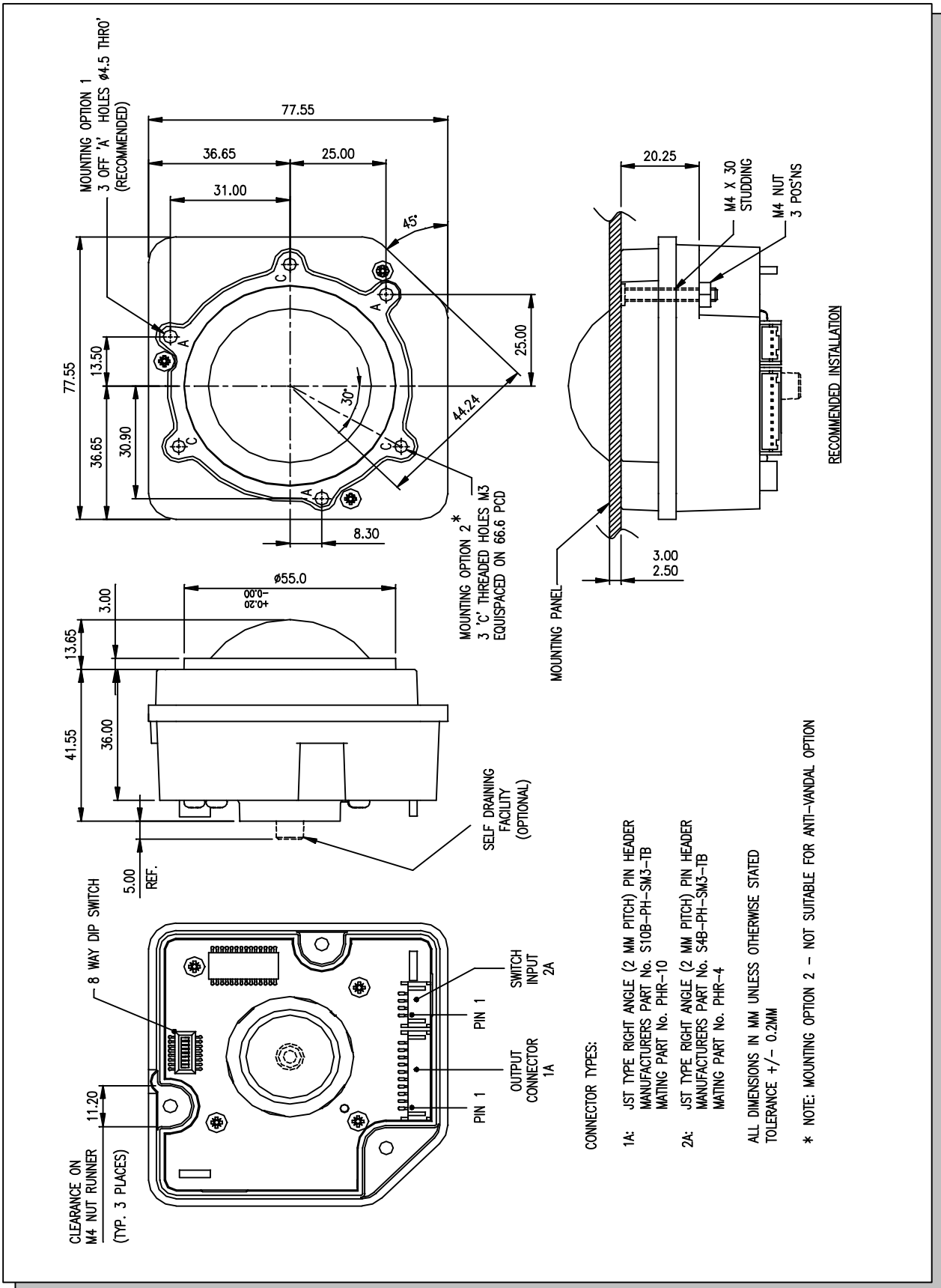
\* Rating of most sensitive components.

All specifications nominal at 20°C except where stated

# O50 Series OPTICAL TRACKERBALL

## • DIMENSIONAL DRAWINGS

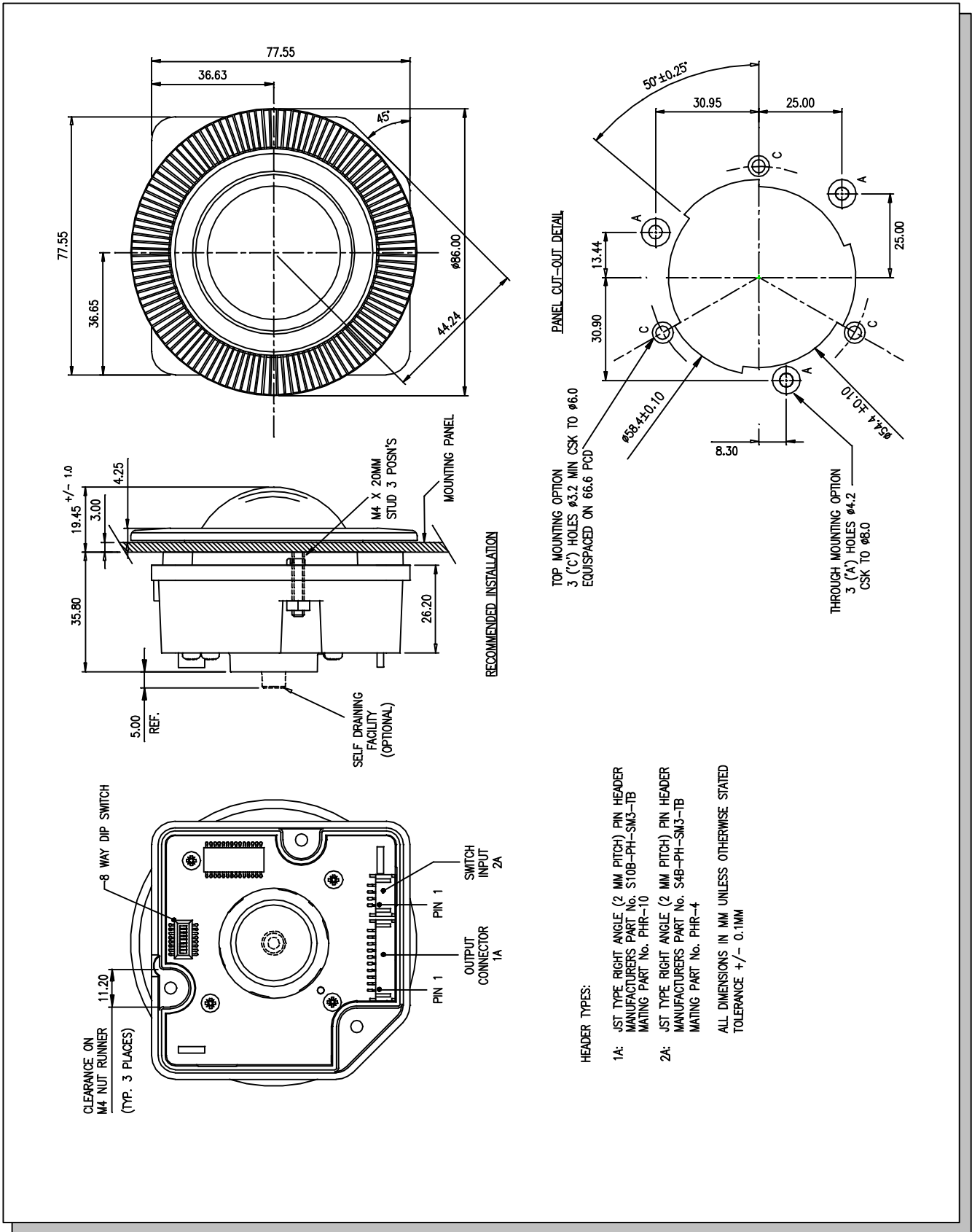
Dimensions for free running and fixed friction/scrapper devices



# O50 Series OPTICAL TRACKERBALL

## • DIMENSIONAL DRAWINGS

### Dimensions for Variable Friction / Removable Ball device



# O50 Series OPTICAL TRACKERBALL

## • EXTERNAL CONNECTION DETAILS

Connections are made to the O50 series unit by means of two latching JST (or equivalent) connectors.

- **Connector 1A:** - Quadrature, USB and PS/2 protocols.
- **Connector 2A:** - Switch inputs.

### Output Connector 1A

Pin Number	Quadrature Output	USB Output	PS/2 Output
1	X1 output	-	-
2	X2 output	-	-
3	Y1 output	-	-
4	Y2 output	-	-
5	-	-	-
6	-	-	-
7	Vcc Supply	Vcc Supply	Vcc Supply
8	-	D -	PS/2Data
9	-	D+	PS/2 Clock
10	GND	GND	GND

### Switch Input Connector 2A

## • OPTIONAL LEAD ASSEMBLIES

Standard Lead assemblies for connection to the O50 unit are available (see table 1). Other lead assemblies can also be supplied to customer specifications.

USB, PS/2		
Cursor Controls Part number	Leads /Adapters	Description
T9902128	Output cable USB	10 way JST style – USB type A, 2.2 meters long
T9902127	Output cable PS/2	10 way JST style – PS/2, 2.2 meters long
T9902125	Switch Input	4 way JST style – bare wires, 500mm long
A3900126	Adaptor	USB to PS/2 convertor for universal interface only.

Table1. Lead assemblies and adapters for connection to device

# O50 Series OPTICAL TRACKERBALL

## • CONFIGURATION

The 8-way dipswitch, located on the underside of the unit, provides the user with optional configuration features. These are detailed in table 2.

Table 2: DIP Switch functionality (Universal Interface)

Universal Interface (PS/2 – USB)			
Switch	Function	Off	On
1	Orientation 1 setting	See diagram (fig 1)	See diagram (fig 1)
2	Orientation 2 setting	See diagram (fig 1)	See diagram (fig 1)
3	VX3 – Virtual 3 axis function	Feature Enabled	Feature Disabled
4	Ballistic Mode	Feature Enabled	Feature Disabled
5	Inverted Y	Feature Disabled	Feature Enabled
6, 7, 8	N/A	Default	

Factory default setting: Dipswitch 1,2 and 3 ON. All other switches – OFF.

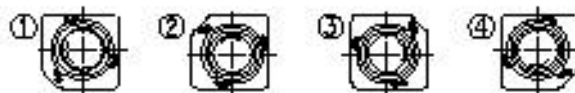
Table 3: DIP Switch functionality (Phase Quadrature)

Phase Quadrature			
Switch	Function	Off	On
1	Orientation 1 setting	See diagram (fig 1)	See diagram (fig 1)
2	Orientation 2 setting	See diagram (fig 1)	See diagram (fig 1)
3	N/A	Default	
4	Resolution	314 pulses per revolution	157 pulses per revolution
5	Inverted Y	Feature Disabled	Feature Enabled
6, 7, 8	N/A	Default	

Factory default setting: Dipswitch 1 and 2 ON. All other switches – OFF.

### **Switches 1 and 2: Orientation settings**

Switches 1 and 2 allow four possible mounting orientations for the Trackerball (See figure.1)



Orientation 1	On	Off	Off	On
Orientation 2	Off	On	Off	On

Figure 1 – Mounting Orientations

# O50 Series OPTICAL TRACKERBALL

## **Switch 3**

**VX3:** is a patent protected facility that provides the same 2 modes of function as a scroll wheel on a 3-axis mouse. This feature is disabled by default and must be enabled by setting dip switch 3 before use.

### **Operation:**

Press middle button once to latch scroll mode one (e.g. dynamic pan feature);  
Press middle button again to latch scroll mode two (e.g. 3<sup>rd</sup> axis zoom feature);  
Further middle button presses toggles between scroll mode one and scroll mode two;  
Press either left or right buttons to cancel feature and resume normal X-Y operation.

## **Switch 4**

**Ballistic Mode:** Simulates cursor acceleration under fast ball movement. (Enabled by default)

## **Switch 5**

**Inverted Y:** Y-axis is inverted for overhead operation.

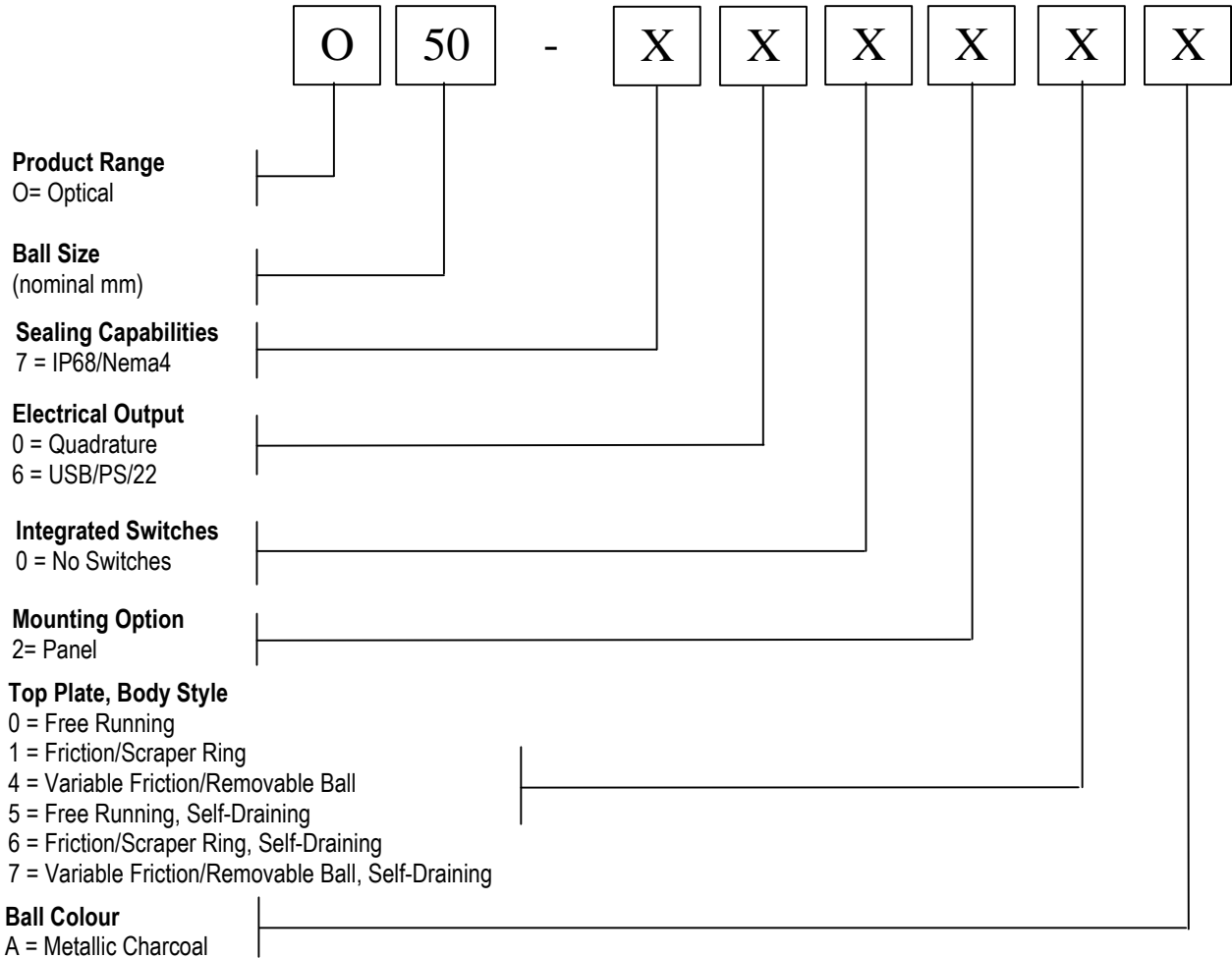
## **Switch 6, 7 & 8**

Switch functions not used.

# O50 Series OPTICAL TRACKERBALL

## • STANDARD PRODUCT OPTIONS

Product Ordering Code **O50 – XXXXX**. Please construct your standard product ordering code by selecting the numbers and letters to suit your specification.



**Ordering Example:**

**O50-70020A:** Optical 50mm, IP68 sealed, phase quadrature output only, no switches, panel mounted, free running, metallic charcoal ball.

## • OPTIONAL EXTRAS

- Anti-Vandal option.
- Self-Draining Facility
- Optional Ball Colours (MOQ applies)
- Customer Specific Colour Matching (MOQ applies)

Contact your local distributor for further details on product variants and custom specifications.