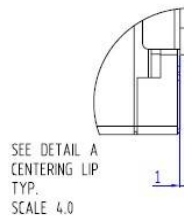


OF-19S

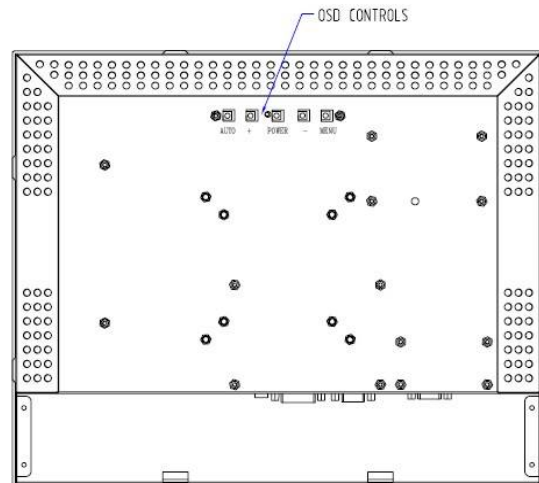
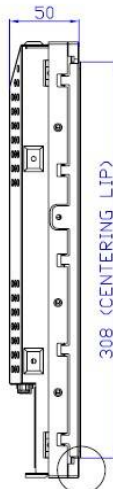
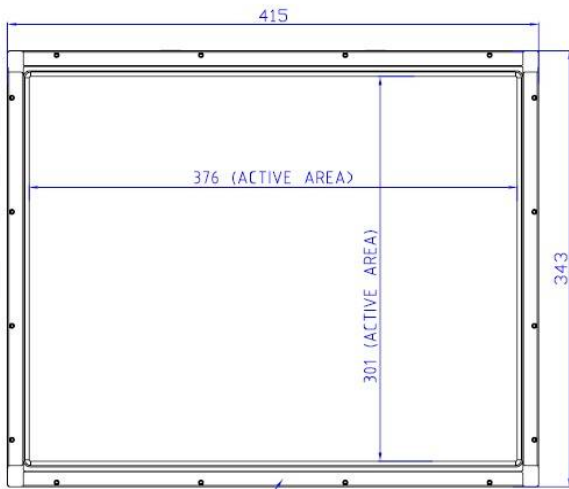
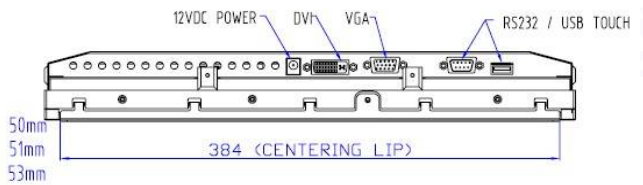
19" SAW Touch Open Frame LCD



- 19" TFT LCD
- SAW Touchscreen
- USB and RS-232 Touch Interface
- Speakers
- Standard VESA Mounting or Side Mounting Brackets - Included



Side thickness:
for 3mm touchscreen 50mm
4mm touchscreen 51mm
6mm touchscreen 53mm



Model	OF-19S	
Display Type	4:3 Ratio 19 " Active matrix TFT-LCD	
Active Area	15.6 " × 11.85"	
Monitor Dimensions	Width: 16.33" Width with brackets: 17.16" Height : 13.50" Height with brackets : 14.33" Depth : 50/51/53mm for 3/4/6mm touchscreen glass	
Suggested Resolution	1280×1024 @ 60Hz	
Supported Resolution	1280×1024 at 60,75 Hz; 1024×768 at 60,70,75 Hz; 800×600 at 60,72,75 Hz; 640×480 at 60,72,75 Hz;	
Support Colors	16.7M	
Brightness(Typ.)	Pure LCD Panel	300cd/m ²
	With SAW Glass Sensor	275cd/m ²
Response Time(Typ.)	6ms	
Viewing Angle	Horizontal(left/right)	80°/80°
	Vertical(up/down)	80°/80°
Contrast Ratio(Typ.)	700:1	
Video Input	Dual Analog RGB and DVI video format	
Signal Input	H/V Separate Sync. (TTL)	
Frequency (H/V)	30~80KHz / 60~75Hz	
Power Supply	Type: External brick Input (line) voltage: 100-240 VAC, 50-60 Hz Output voltage/current: 12 volts at 4 amps max	
Environment	Operating Temp.	0 ~ 50°C
	Storage Temp.	-20 ~ 60°C
	Operating RH:	20% ~ 80%
	Storage RH:	10% ~ 90%
MTBF	50,000 Hours	
LCD Back light Life(Typ.)	50,000 Hours	
Weight (N.W/G.W)	12 lbs. / 15 lbs.	
Power Consumption	50W Max.	
Mount Interface	1)VESA 75mm and 100mm 2)Mount bracket, horizontal or vertical (Standard mount brackets are supplied)	
OSD Control	Buttons	AUTO,+,PO WER,-,MENU
	Function	Brightness, Contrast Ratio, Auto-adjust, Phase, Clock, H/V Location, Languages, Function, Reset
Touch screen Type	19" SAW 3mm compact touch sensor; 19" SAW 4mm compact touch sensor; 19" SAW 6mm compact touch sensor; (Available Options: Thickness/Anti-glare)	
Touch System Interface	Having USB and Serial(RS232) interface	
Touch Response time	USB/Serial: 8.4/10.4ms	
Agency Approval	ETL, FCC, CE, RoHS	